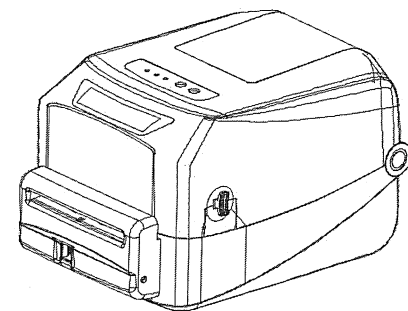


# Printex

## User's Manual

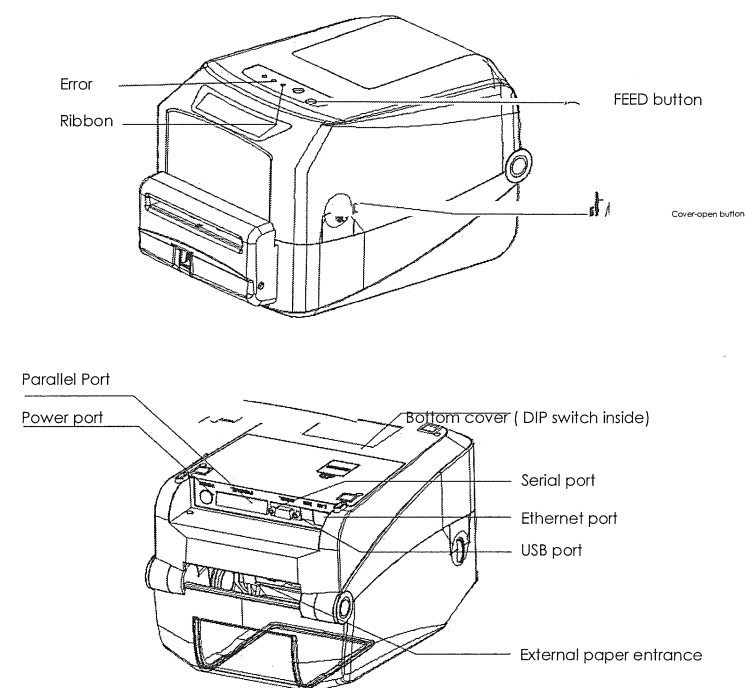
For Thermal Transfer Barcode Printer

Printex X230T / Printex X220T  
Printex X230 / Printex X220

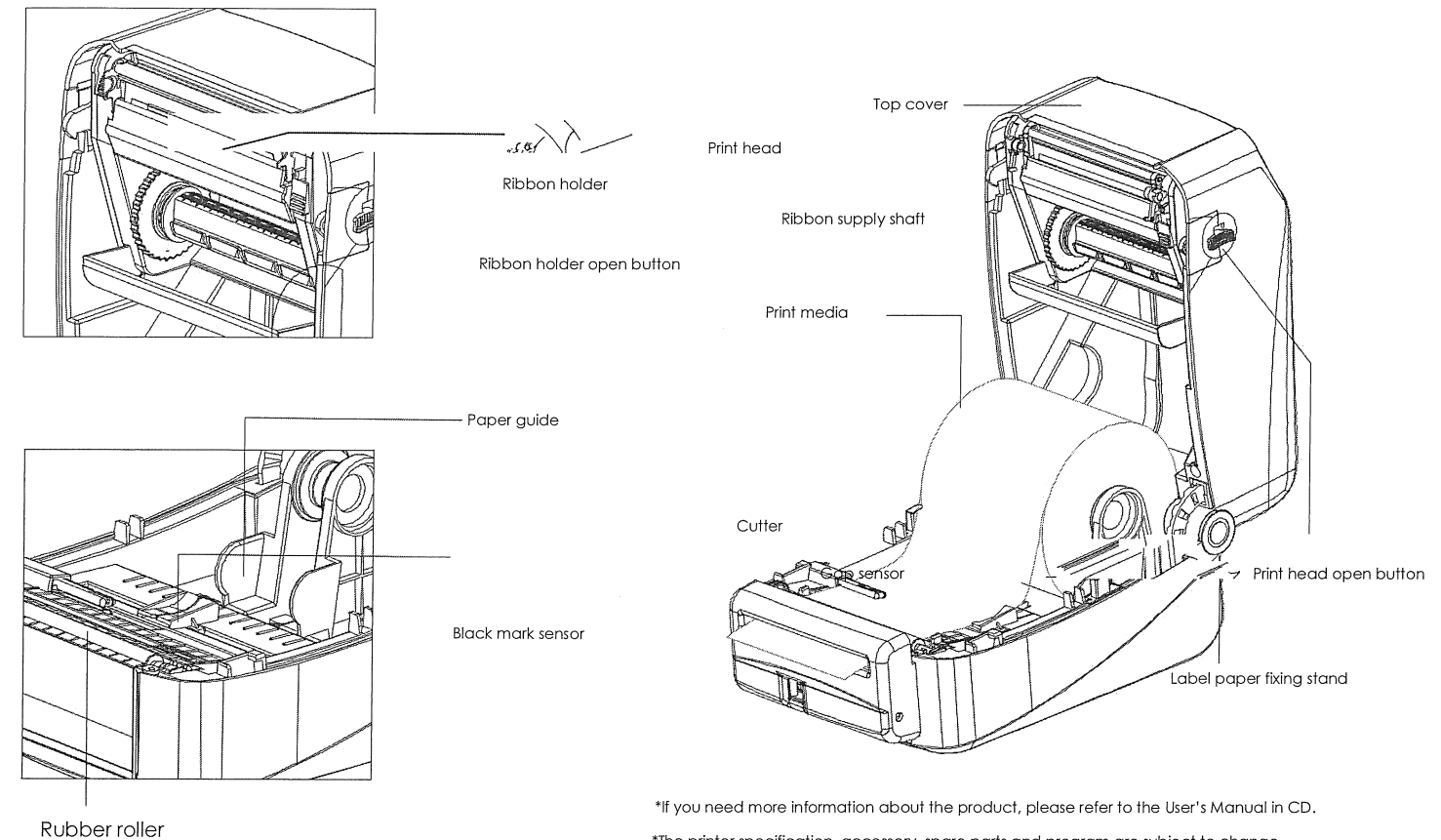


Please read this user guide before printer operation and keep this guide for reference.

ON LINE: Power indicator    ERROR: Error indicator    RIBBON: Ribbon status Indicator



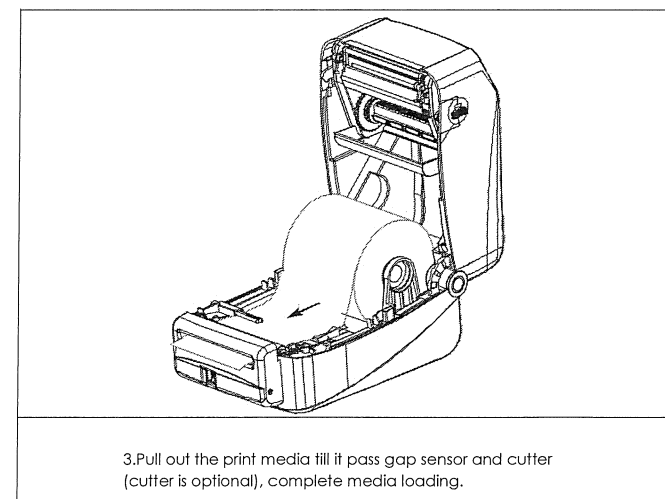
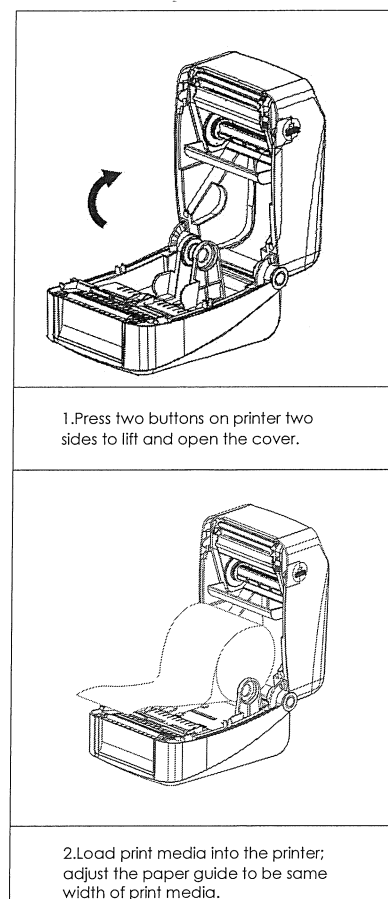
**Note:** The interface of printer showed in picture may have some differences from the model your purchased. As for the actual interface, please refer to the product specifications



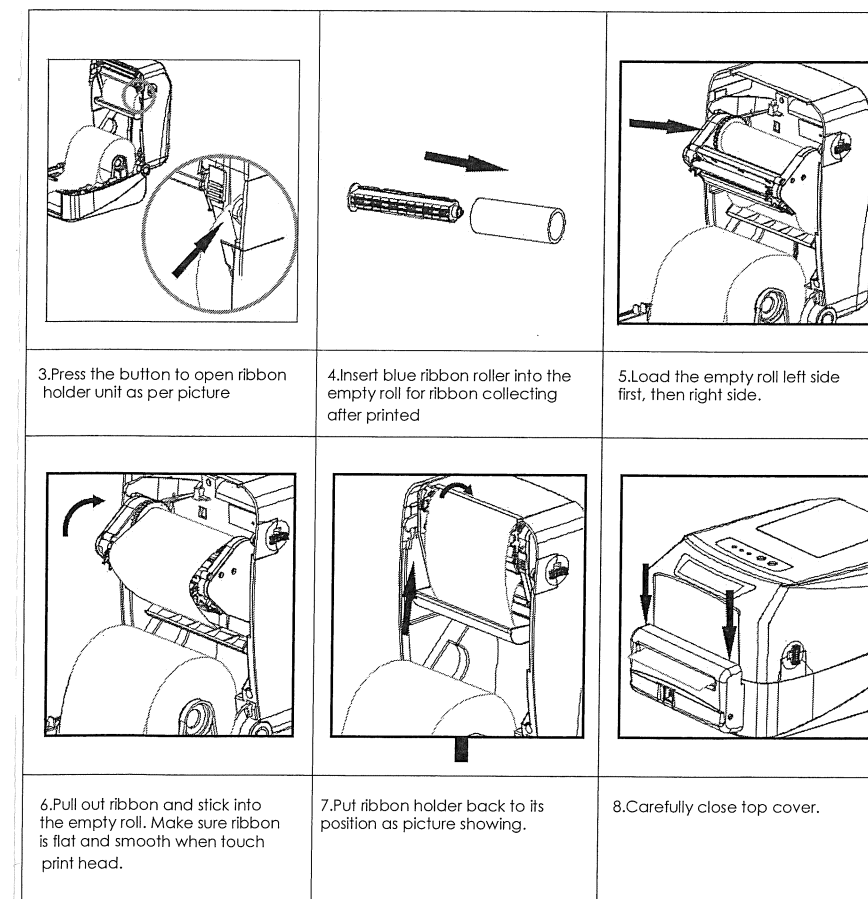
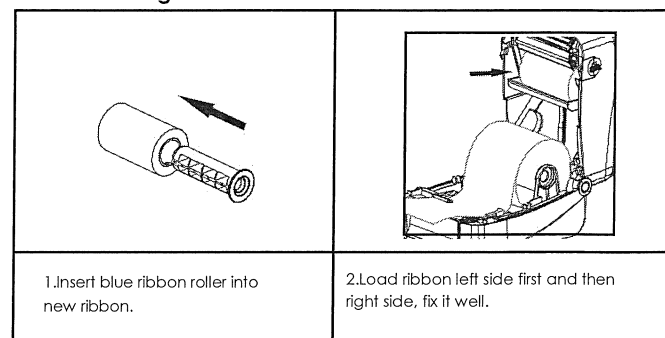
\*If you need more information about the product, please refer to the User's Manual in CD.

\*The printer specification, accessory, spare parts and program are subject to change without prior notice.

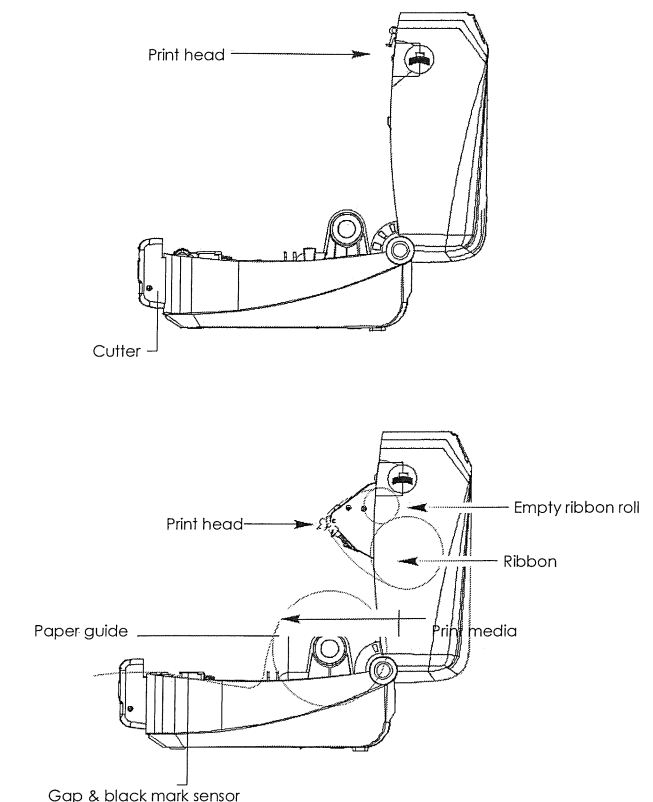
### Print media loading



### Ribbon loading



### Ribbon and print media loading diagram



1.Introduction

Thanks for choosing Printex X230T / Printex X220T / Printex X230 / Printex X220 series direct thermal transfer label printer.

This series printer is built with 2sets of gear to drive motor,with capability of handling 300meters long ribbon and large label roll.Printer inner volume is fit for 5" OD(Outer Diameter)paper roll,if using external paper holder,you can install 8.4"OD industrial grade label roll.

This printer is designed for real-time and batch label printing,with standard serial, parallel,USB and Ethernet connection port. Direct thermal printing and thermal transfer printing modes are all in one printer body,so you can choose various kinds of printing materials,for example:thermal paper,plain paper,coated paper,silver paper, plastic paper etc.

Common 1D barcode and 2D barcode fonts are built inside printer,also it support 4 direction printing,characters can be enlarged from 1 to 10 times .Besides,it supports 5 different size bitmap fonts,OCR-A and OCR-B fonts. This series printer are the best choice among the same class with its enhanced features, economical price and excellent printing quality.

Please refer to the information of software when printing label. If you need to write command by yourself, please also read program manual in CD or download it from our website

• Application Field

<b>Manufacturing &amp; Warehousing logistic industry</b>	<b>Healthcare</b>	<b>Office &amp; Studio</b>
Product labeling and marking	Patients marking	
Warehouse management label	Medicine marking	<b>Retail</b>
Category marking label	Specimen marking	Price Label marking
Operation instruction marking label	<b>Parcel Post</b>	Product item marking
Distributing instruction marking label	Mailing label	Jewelry product marking

2.LED indicator and Function

Direct thermal printing

LED Indicator status	Descriptions
Power indicator is on, Error indicator is off.	Printer is powered on and in normal printing status
Power indicator flashes every 640ms, Error indicator is off.	Printer is paused
Power indicator is off,Error indicator goes for 80ms,then goes off for 160ms,printer start beeping.	Printer cover is opened
Power indicator is off,Error indicator goes on for 500ms,then goes off for 6s.	Label gap detection error
Power indicator is off, Error indicator flashes every160ms,after two times flashing, Error indicator goes off for 320ms,printer start beeping.	Paper out
Power indicator is off,Error indicator flashes every160ms,after three times flashing.Error indicator goes off for 320ms, printer start beeping.	Black mark detection error
Error indicator flashes every 160ms.	Printer overheated protection mode is activated. After 1minute,the printer CPU will check print head temperature again. When temperature return normal, printer will work normally.

Thermal transfer printing

Ribbon indicator and power & error indicator work independently, below status can be existed with above status.

LED Indicator status	Descriptions
Ribbon indicator is on.	Ribbon is installed successfully
Ribbon indicator flashes every 300ms, beeper sounds every 2.4s	Ribbon improperly installed: no ribbon, or ribbon end, or ribbon broken

NOTE: Beeper function can be enabled through setting DIP switch.

3.Button Function

Feed  
When the printer is ready(LED blue fixed),click the button,label paper into the front end of a paper label.

Pause  
The printer in the print, click the PAUSE button to print suspended. At this time power indicator is blue flashing. Just click the button, the print job resume normal.

Power-on function  
The printer has six kinds of power on functions can be used to set or test the printer hardware.In the boot and press the button with lamp signal release key can start these functions.

Six Power-on Functions:

Function	Descriptions
Self-test page	A.Turn off the printer. B.Make sure the paper roll is installed correctly and the printer top cover is closed. C.Press and hold FEED button and turn on the printer. Selftest page will be printed, then release FEED button.
DIP Switch page	A.Turn off the printer. B.Make sure the paper roll is installed correctly and the printer top cover is closed. C.Press and hold PAUSE button and turn on the printer. When paper feed and then release FEED button,DIP switch page will be printed out.
Debugging Mode	A.Turn off the printer. B.Make sure the paper roll is installed correctly and the printer top cover is closed. C.Press and hold PAUSE and FEED button and turn on the printer.When Power indicator(blue) and Error indicator (red) are on at the same time,release PAUSE and FEED button,printer goes to Debugging Mode.

Skip AUTO.BAS program	A.Turn off the printer. B.Press and hold PAUSE and FEED button and turn on the printer. When power indicator (blue) is off and the error indicator(red) is on, release PAUSE and FEED button, printer will skip running AUTO. BAS program, and them power indicator will be on.  When printer power turn on,or it is in thermal transfer
Printer Initialization	A.Turn off the printer.  B.Press and hold PAUSE and FEED button and turn on the printer. When power indicator (blue) is on and the error indicator(red) is off, release PAUSE and FEED button, all data in printer DRAM will be cleared and the printer setting will be restored to factory default setting.
Ribbon Detection	printing mode,printer will automatically detect ribbon status,to check if ribbon installed,or ribbon end,or work normally.

Note: You're suggested to use up to 80mm wide paper for full printer information printing when relating with above power-on functions.

Storage space is exceeded(FLASH/ DRAM)	FLASH/ DRAM Storage is exceeded	Clear unnecessary file from FLASH/ DRAM.  DRAM only can save 256 files.  Max capacity:1024KB.  FLASH only can save 256 files.  Max capacity:1024KB.
Not good printing quality	Ribbon and label improperly installed. Too much dust or adhesive on print head. Print density setting wrong. Print head damaged. Ribbon and label not match.	Re-install ribbon or label.  Clean print head and print and print again.  Clean Rubber roller.  Adjust print density and speed. Take selftest page to check if printing are completely to confirm if necessary to change new print head.  Change suitable ribbon and label paper.  If the label thickness exceed 0.22 mm or it will affect the printing quality.  Check if the print head base is totally closed.
When printing paper out of step	Label paper size wrong setting. Label sensor was covered	Adjust label size and print again. Reduce the gap value and print again. Clear the sensor.
Data miss printing in one or two sides	Label paper size wrong setting. Exceed the max printing width.	Adjust label size and print again. Change roller with maximum width
Ribbon wrinkle	Print head unbalanced stress; ribbon & label improperly installed; Adjust the DIP Switch to enlarge Label feeding not smoothly; Print density setting incorrectly.	Reset the label print density. Adjust paper width fixing stand to fit your label paper size. Adjust the DIP Switch to enlarge the scrolling speed of ribbon.
Grey line appeared in black label	Dirty on print head. Dirty on rubber roller.	Clean print head. Clean rubber roller
Printing not stable	Printer in HEX Dump mode RS-232 setting wrong	Restart your printer and leave Dump Mode. Reset the printer consistent with computer baud rate.

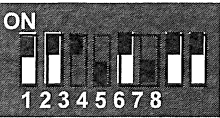
4.DIP SWITCH FUNCTION

DIP NO.	Function	ON	OFF
1	Beeper	Disabled	* Enabled
2	Cutter	Enabled	* Disabled
3	Ribbon detect	Disabled	* Enabled
4	Sensor	* High sensitivity	Normal Sensitivity
5	Power on paper feed	Disabled	* Enabled
6	Reserved	* Enabled	Disabled
7&8	Baud rate set	-----	* Default value

BAUD RATE:

7	8	BAUD RATE
OFF	OFF	9600 *
OFF	ON	19200
ON	OFF	38400
ON	ON	115200

\*is default value.



5.Troubleshooting

Below the table of contents are generally common problems and solutions, you can also contact your local service provider for more technical support.

Problems	Possible Reasons	Solution and Suggestion
Power indicator not "ON"	Plug to AC outlet and plug to printer not well connected. Printer power not turned on	Check power connector and AC outlet if plugs are correctly connected. Turn on power switch
	Print head not well closed	Close print head by pressing whole print head mechanism
	Ribbon end Ribbon improperly installed	Change new ribbon. Refer to Ribbon loading steps in User Manual to re-install ribbon
	Label paper end Label paper improperly installed Gap sensor detection error	Change new label paper Refer to Print media loading steps in User Manual to re-install paper. Adjust paper specification and print again
	Label paper jamed	Clear jamed paper
		Reconnect the cable If connecting with Serial cable 1.Change a new cable Check if Pin configuration in cable two sides are matching each other; 2. Check if baud rate setting on PC and printer are the same.  If connecting with Ethernet

Not printing	cable improperly connected	cable 1.Check if RJ-45 green/orange LED indicator is on. 2.When printer receive and process printing data,LED will be orange color; 3.Check if printer IP is assigned in DHCP mode 4.Check if fixed IP address is correctly set in printer properly. 5.Wait for some minutes to make sure printer is connected server and printing a selftest page to confirm printer IP address.
	Pin configuration in cable two sides are not matching each other	If connecting with USB cable 1.Check if choose USB virtual port in driver of computer. Please try and print if many virtual ports are exited. 2.Change new cable. 3.Check the ribbon model and specification 4.Check and re-install ribbon to make sure printing side touch label paper. 5.Re-install the ribbon. 6.Clean print head and print again. 7.Print density setting wrong. 8.Re-connect print head cable. 9.Re-connect motor cable 10.Check if there is PRINT command at the end of printing file; or if there is CRLF command at the end of every line.