

# Printex

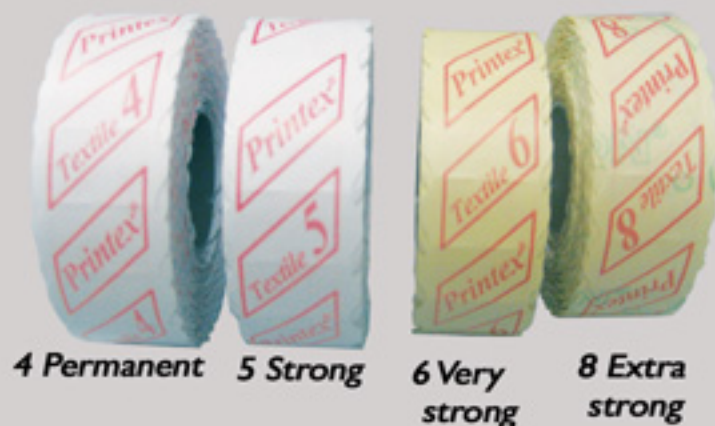
Made in Italy  
  
[www.printexsrl.com](http://www.printexsrl.com)

## Consecutive Labeller



## Textile Labels

STANDARD COLOURS



# Labels models

**22x12**

## Mod.5322



22x12 waved, 5 fixed, 3 consecutive figures.  
Possibility to print sizes(XLMS) or numbers



Formato 22x12 onda, 5 caratteri fissi,  
3 progressivi.  
Possibilità di inserire taglie (XL,M,S) o numeri



22x12 ondulée, 5 chiffres, 3 chiffres progressives.  
Possibilité d'indiquer les tailles (XL,M,S) ou les nombres



22x12 ovalada, 5 cifras fijas, 3 cifras progresivas  
Posibilidad de introducir tallas (XL,M,S) o numeros

Singola progressione  
Numeration simple  
Simple numbering  
Numeración singular

Doppia progressione  
Numeration double  
Double numbering  
Numeración doble

Ripetizione stesso numero  
Repetition du meme nombre  
Repeated numbering  
Ripetición numero

XL 100001

XL 100002

XL 100001

XL 100001

XL 100001

XL 100001

XL 100001

## Mod.3422



22x12 waved, 3 fixed, 4 consecutive figures.  
Possibility to print sizes(XLMS) or numbers



Formato 22x12 onda, 3 caratteri fissi,  
4 progressivi.  
Possibilità di inserire taglie (XL,M,S) o numeri



22x12 ondulée, 3 chiffres, 4 chiffres progressives.  
Possibilité d'indiquer les tailles (XL,M,S) ou les nombres



22x12 ovalada, 3 cifras fijas, 4 cifras progresivas  
Posibilidad de introducir tallas (XL,M,S) o numeros

Singola progressione  
Numeration simple  
Simple numbering  
Numeración singular

Doppia progressione  
Numeration double  
Double numbering  
Numeración doble

Ripetizione stesso numero  
Repetition du meme nombre  
Repeated numbering  
Ripetición numero

XL 00001

XL 00002

XL 00001

XL 00001

XL 00003

XL 00003

XL 00003

**26x12**

## Mod.5326



26x12 waved, 4/6 fixed, 3/2 consecutive figures.  
Possibility to print sizes(XLMS) or numbers



Formato 26x12 onda, 4/6 caratteri fissi,  
3/2 progressivi.  
Possibilità di inserire taglie (XL,M,S) o numeri



26x12 ondulée, 4/6 chiffres, 3/2 chiffres progressives.  
Possibilité d'indiquer les tailles (XL,M,S) ou les nombres



26x12 ovalada, 4/6 cifras fijas, 3/2 cifras progresivas  
Posibilidad de introducir tallas (XL,M,S) o numeros

Singola progressione  
Numeration simple  
Simple numbering  
Numeración singular

Doppia progressione  
Numeration double  
Double numbering  
Numeración doble

Ripetizione stesso numero  
Repetition du meme nombre  
Repeated numbering  
Ripetición numero

XL 10 001

XL 10 001

XL 10 001

XL 10 001

XL 10 001

XL 10 001

Singola progressione  
Numeration simple  
Simple numbering  
Numeración singular

Doppia progressione  
Numeration double  
Double numbering  
Numeración doble

Ripetizione stesso numero  
Repetition du meme nombre  
Repeated numbering  
Ripetición numero

XL 10001

XL 10002

XL 10002

XL 10002

XL 10001

XL 10001

## Mod.3426



26x12 waved, 4 fixed, 4 consecutive figures.  
Possibility to print sizes(XLMS) or numbers



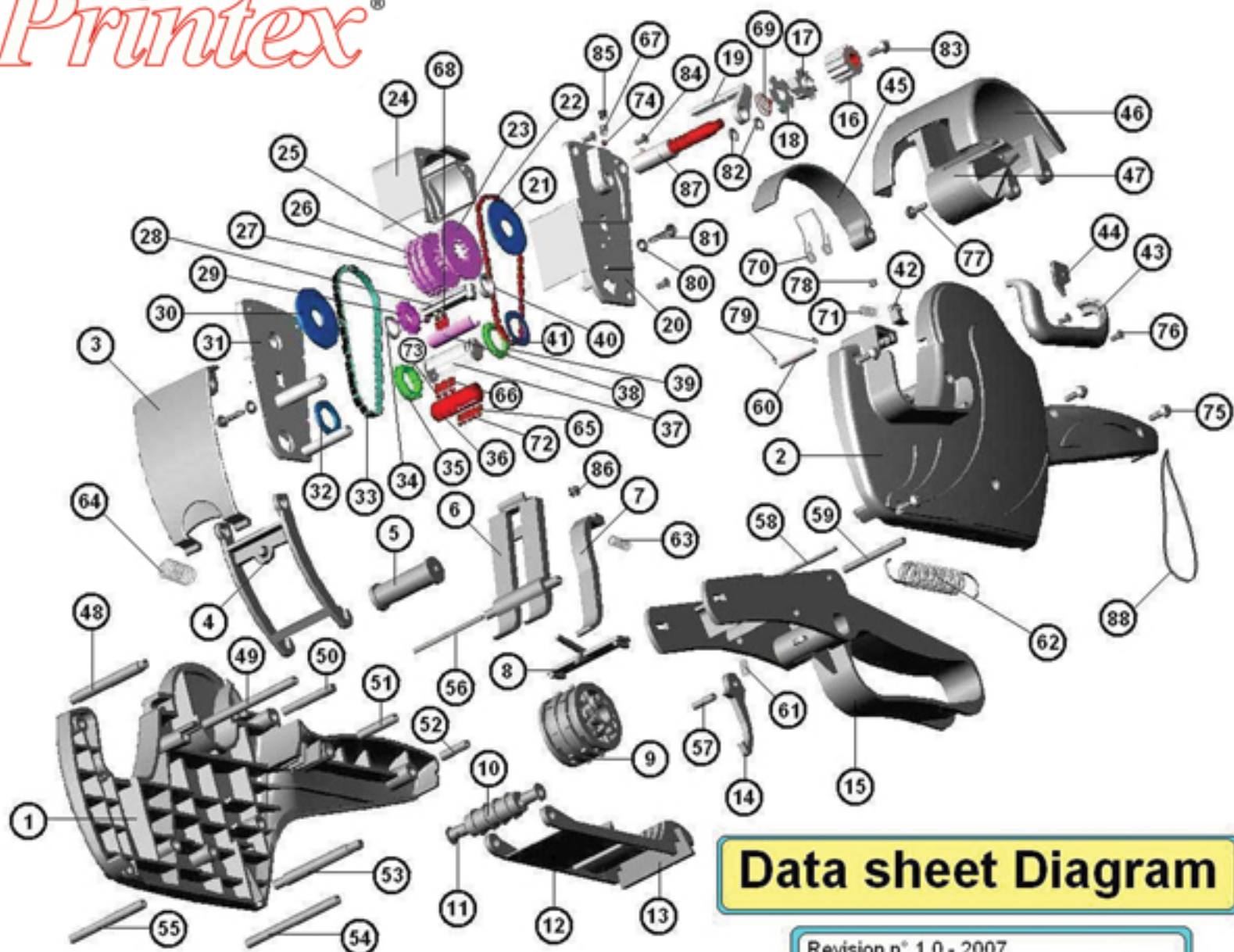
Formato 26x12 onda, 4 caratteri fissi,  
4 progressivi.  
Possibilità di inserire taglie (XL,M,S) o numeri



26x12 ondulée, 4 chiffres, 4 chiffres progressives.  
Possibilité d'indiquer les tailles (XL,M,S) ou les nombres



26x12 ovalada, 4 cifras fijas, 4 cifras progresivas  
Posibilidad de introducir tallas (XL,M,S) o numeros



## Data sheet Diagram

Revision n° 1.0 - 2007

POS.	CODE	DESCRIPTION
1	V5019-PRV	RIGHT BODY SIDE - BLACK -
2	V5020-PRV	LEFT BODY SIDE - BLACK
1	V5124-PRV	RIGHT BODY SIDE - GREY -
2	V5125-PRV	LEFT BODY SIDE - GREY -
3	V5041F-3	INK ROLL COVER - FUME® -
4	V5035-4	INK ROLL HOLDER
5	TAMP/PRINT V	INK ROLL PRINT V
6	V5024-6	DRUM COVER
7	V5022-7	BRAKE
8	V5040-8	LABEL SPLIT
9	V7025-9	DRUM ADVANCER (22 X 12) (26 X 12)
10	V5201-10	APPLICATOR ROLLER
11	V5014-11	APPLICATOR ROLLER BUSHING
12	V5021-12	BASE PLATE (22 X 12) (26 X 12)
13	V5012-13	BASE PLATE RELEASE KNOB
14	V5013-14	LABEL ADV. DRUM (26X12)
15	V5025N-15	HANDLE - BLACK -
16	V5061	SETTING KNOB
17	V5062	CROWN GEAR
18	V5063	GEAR FOR DOUBLE PROGRESSION
19	V5064	INDICATOR
20	V5065	PRINT CASE LEFT SIDE
21	V5066	SPACER
22	V5067	STATIC BAND
23	V5068	STATIC GEARED UNIT WHEEL
24	V5069	BAND SEPARATOR 3/4 PROGRESSION
25	V5070	FINAL PROGRESSIVE GEARED UNIT WHEEL
26	V5071	INT. PROGRESSIVE GEARED UNIT WHEEL
27	V5072	INITIAL PROGRESSIVE GEARED UNIT WHEEL
28	V5073	PIVOT BASE F/PROGRESSION WHASHER 2/3
29	V5074	PROGRESSION WHASHER
30	V5075	SPACER
31	V5076	PRINT CASE RIGHT SIDE
32	V5077	SPACER
33	V5078	CONSECUTIVE BAND
34	V5079	SPACER
35	V5080	PROGRESSIVE PRINTING RING
36	V5081/53	POSITIONER BASE VERS. 53
37	V5082/53	POSITIONER COVER VERS. 53
38	V5083	PIVOT COVER F/PROGRESSION WHASHER 2/3
39	V5084	STATIC PRINTING RING
40	V5085	SPACER
41	V5086	SPACER
42	V5087	EXTERNAL DRUM ADVANCER

POS.	CODE	DESCRIPTION
43	V5088	CARTER
44	V5089	COVER F/EXTERNAL DRUM ADVANCER
45	V5090	STICKER ROLL BRAKE
46	V5048F-28	ROLL COVER - FUME® -
47	V5036F-29	ROLL HOLDER - FUME® -
48	V10002-30	PIVOT SHAFT (5 X 39,4)
49	V10029-31	PIVOT SHAFT (4 X 50,4)
50	V10006-32	PIVOT SHAFT (4 X 35)
51	V10033-33	PIVOT SHAFT (4 X 19,4)
52	V10021-34	PIVOT SHAFT (4 X 14)
53	V10017-35	PIVOT SHAFT (5 X 51,8)
54	V5000-36	PIVOT SHAFT (4 X 47,6)
55	V5003-37	PIVOT SHAFT (4 X 39,4)
56	V20205	BRAKE PIVOT (2 X 40,4)
57	V5001-42	SHAFT F/DRUM ADVANCER (3 X 11,8)
58	V10025-39	HANDLE PIVOT (2 X 34)
59	V10249-40	HANDLE PIVOT SHAFT (3 X 33)
60	V10252	EXTERNAL DRUM ADVANCER PIVOT
61	V5029-43	DRUM ADVANCER SPRING (0,4X3,2X11,5)
62	RP16	HANDLE RETURN SPRING
63	V5047-45	BRAKE AND RELEASE KNOB SPRING (0,2X3,2X12)
64	V5060-46	INK ROLL HOLDER SPRING ( 0,5X6X 21)
65	V5091	POSITIONER SPRING STATIC SIDE
66	V5092	POSITIONER SPRING CONSECUTIVE SIDE
67	V5093	BALL BEARING SPRING
68	V5094	PROGRESSION PIVOT SPRING
69	V5095	SPRING
70	V5096	STICKER ROLL BRAKE SPRING
71	V5097	EXTERNAL SPRING F/DRUM ADVANCER
72	V10300	BALL BEARING ( 2 )
73	V10301	BALL BEARING ( 2,5 )
74	V10302	BALL BEARING ( 2,5 )
75	V10269-48	SCREW (2,5 X 8) TRI-PROFILE
76	V10271	SCREW F/CARTER
77	V10280-49	VITE HI-LO PER PORTAROTOLO (3 X 10)
78	V10273	ADJ SCREW F / EXTERNAL DRUM ADVANCER
79	V10275	LOCKWASHER (1,5)
80	V10197-52	WASHER F/PRINT HEAD HOLDING SCREW
81	V5043-51	PRINT HEAD HOLDING SCREW (2,0X16)
82	V10276	LOCKWASHER (3,2)
83	RP19	SCREW F/ KNOB
84	V10281-50	PRINT HEAD SCREW (2,2X9,5)
85	V10277	BALL BEARING SCREW
86	V10286-53	BRAKE ADJUSTMENT SCREW ( 5/4 )
87	V1053	ADJ SHAFT F/READ BANDS VER. 53
	V1034	ADJ SHAFT F/READ BANDS VER. 34
88	V10061-56	HOLDING STRAP

# Printex® Consecutive Labeller

**2 Print Lines**

**2 Ligne d'Impresion**

**2 Linee di Stampa**



**INK ROLL**

**BLISTER OF 5 PCS  
100 PCS/BOX**

## 3-4 Numbering Digits, Single and Double Numbering

**32x19**

TOP Line 11 Digits  
Numeric and Alfanumeric  
Botton Line  
5 Digits Fix 3 Digits Numbering

**29x19**

TOP Line 12 Digits  
Numeric and Alfanumeric  
Botton Line  
5 Digits Fix 3 Digits Numbering

**37x19**

TOP Line 14 Digits  
Numeric and Alfanumeric  
Botton Line  
3 Digits Fix 4 Digits Numbering

**26x19**

TOP Line 10 Digits  
Numeric and Alfanumeric  
Botton Line  
5 Digits Fix 3 Digits Numbering

**29x28 Label Size**

29X28MM-7 MAXI DIGITS



**37x28 Label Size**

37X28MM-7 MAXI DIGITS



<p>SHIRT-124-S</p> <p>XL-22 001</p> <p>MOD.118A-32</p>	<p>SHIRT-124-ST</p> <p>42 1/2 30 998</p> <p>MOD.128-29</p>	<p>SHIRT-124-BLUE</p> <p>XXL 1200</p> <p>MOD.148-37</p>	<p>SHIRT-124-S</p> <p>42 1/2 30 998</p> <p>MOD.108A-26</p>
<p>22345 -124-6</p> <p>XL-22 002</p> <p>MOD.118-32</p>	<p>SHIRT-124-ST</p> <p>XL-22 999</p> <p>MOD.128A-29</p>	<p>SHIRT-124-BLUE</p> <p>XXL 1201</p> <p>MOD.147A-37</p>	<p>33556-124-S</p> <p>XL-22 999</p> <p>MOD.108-26</p>
<p>SHIRT-124-S</p> <p>XL-22 001</p> <p>MOD.118A-32</p>	<p>SHIRT-124-ST</p> <p>42 1/2 30 998</p> <p>MOD.128A-29</p>	<p>SHIRT-124-BLUE</p> <p>XXL 1200</p> <p>MOD.148A-37</p>	<p>SHIRT-124-S</p> <p>42 1/2 30 998</p> <p>MOD.108A-26</p>
<p>SHIRT-124-S</p> <p>XL-22 001</p> <p>MOD.118A-32</p>	<p>SHIRT-124-ST</p> <p>XL-22 998</p> <p>MOD.128A-29</p>	<p>SHIRT-124-BLUE</p> <p>XXL 1200</p> <p>MOD.148A-37</p>	<p>SHIRT-124-S</p> <p>XL-22 998</p> <p>MOD.108A-26</p>

**Double numbering Simple numbering**

**Labels**

**Standard box**



**4 Permanent 5 Strong**



**6 Very strong 8 Extra strong**



**Colors**

Made in Italy



[www.printexsrl.com](http://www.printexsrl.com)

# Copernico Software

Complete your set for care labels printing using our label editor software Copernico licensed by Printex.

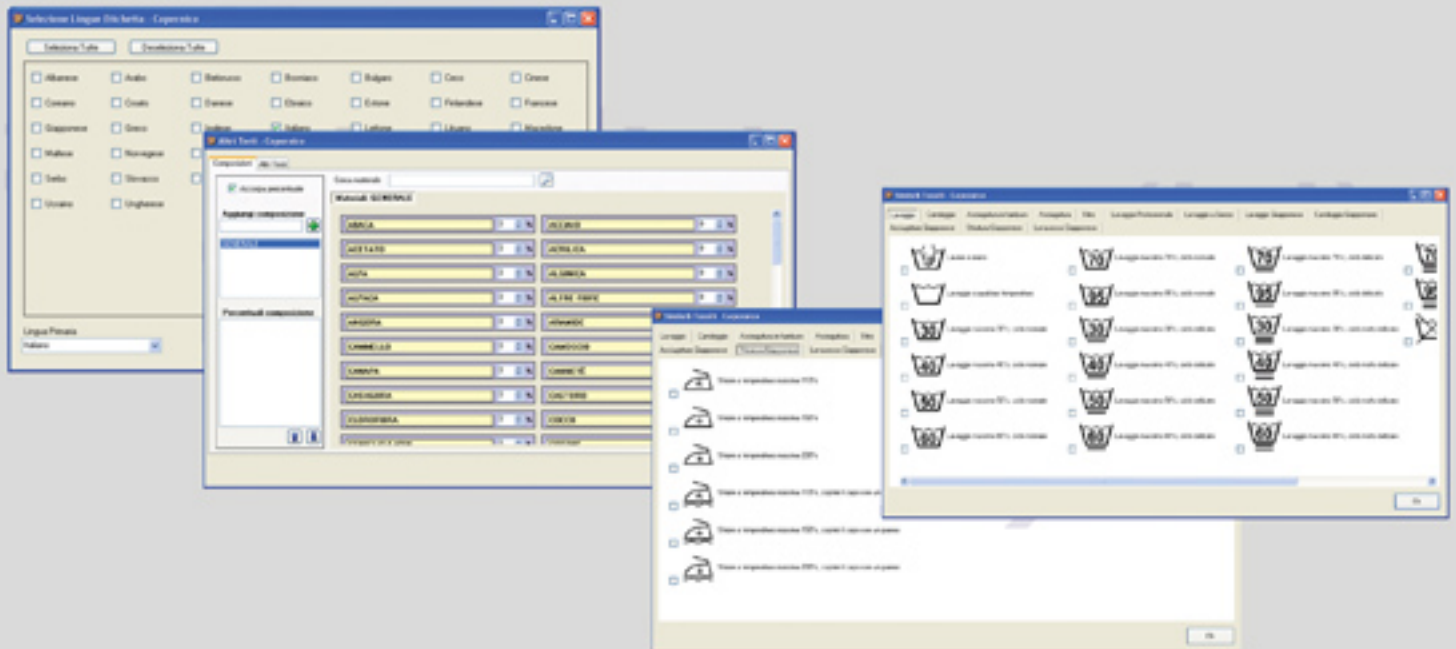
It is in compliance with current regulation regarding the symbol and details that have to be printed on the label.

A complete and easy **wizard** will help you to make a new care label according to your need.

A **rich toolbar** is at your disposal to insert lots of information on the labels.

Insert all the fabric component of the garment(like lining,fabric,and much more..). All international and japanese washing symbols are available in **37 different languages**.

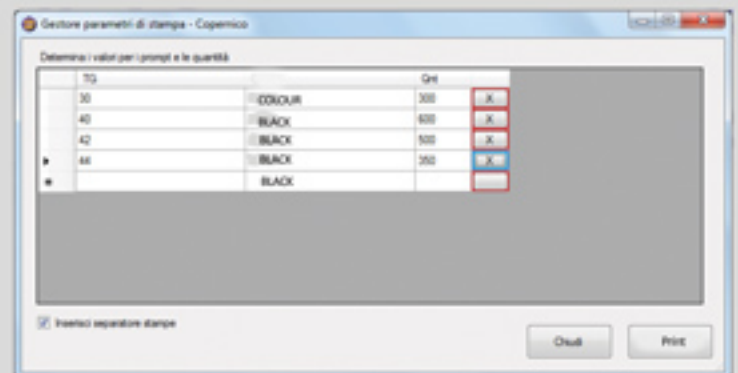
Copernico gives the possibility to import logos,images,and different kind of barcode.



Also Copernico allows to import a database that contains the info you need to put on the label.

It also manages the **double face printing** showing you the front and back side of the label.

If you have lots of different labels to print,thanks to Copernico you have the possibility to make a queue printing that will print automatically all different labels(check the picture below).



Copernico works with all printers equipped with Microsoft drivers. Suitable to print on care labels,retails tickets,self adhesive labels and others.

REQUIREMENTS:

1 GHZ CPU

1 GB RAM

HDD 400MB FREE

Recommended resolution:1024x768

Compatible with Microsoft Window xp/vista/7/8/10 32/64 BIT

MADE IN ITALY

**Printex**  
Care Labels

# Pratic **PATTERN TACKER**

GRAFFATRICE

AGRAFEUSE

ENGRAPADORA



Nuova graffatrice in plastica PRATIC mod. P19.

Per il fissaggio della carta e dei primi strati di tessuto sul materasso tramite punti metallici aperti.

Interamente progettata e realizzata in Italia.

Nuovo sistema di fuoriuscita dei punti.

Silenziosità di funzionamento.

Unico modello in materiale plastico, antishock con il vantaggio della leggerezza, della praticità e funzionalità



New tacker in plastic PRATIC mod. P19.

To fix the paper and the first fabric sheets on mattresses by means of open metallic staples.

Completely designed and manufactured in Italy

New system to put out the staples.

No - noise operation.

Unique antishock plastic model, light, practical and functional.



Nouvelle agrafeuse en plastique PRATIC mod. P19.

Idéale pour fixer le papier et les premières strates de tissu sur les matelas par des agrafes ouvertes.

Entièrement dessinée et réalisée en Italie.

Nouveau système pour pousser les agrafes.

Fonctionnement silencieux.

Modèle unique en plastique, antichoc, léger, pratique et fonctionnel.



Nueva engrapadora plastica de precision para textiles.

Ideal para fijar el diseno sobre el tejido con grapas metalicas abiertas.

Completamente disenada y producida en Italia.

Nuevo sistema de salida de la grapas.

Functionamiento silencioso.

Unica engrapadora en material plastico antichoque, lijera, practica y fional.

## GENUINE STAPLES

1/4"



mm. 7x11

3/8"



mm. 10x11

1/2"



mm. 13x11



Punta che **NON** rovina il tessuti

**P**unti metallici aperti, universali, perfezionati per non danneggiare il tessuto.

Disponiamo di tutti i ricambi per PRATIC mod. P19. Su richiesta inviamo espreso per la veloce individuazione dei singoli pezzi.

**T**he needle point staples are open, universal and perfected to not damage the textile.

All PRATIC mod. P19 spare parts are available on stock. Upon request, you can receive the parts blowout, to easily identify the single pieces.

**A**graffes ouvertes, standard, améliorées pour ne pas abimer le tissu.

Toutes les pièces de rechange pour PRATIC mod. P19 sont disponibles en stock. Sur demande vous pouvez recevoir un simple schéma pour les identifier rapidement.

**L**as grapas metalicas son abiertas, universal y perfeccionadas para no danar la tela.

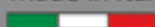
Todos los repuestos de la PRATIC mod. P19 estan disponibles. Usted puede adquirir por separado cualquier parte, por medio del diseno que le proporcionamos.

**Printex**

Via Casilina Località Piombinara 00034 Colferro Roma ITALY  
TEL-0039 06 9770590 fax 0039 06 9770591 E-mail:info@printexsrl.com  
www.printexsrl.com



Made in Italy



www.printexsrl.com

# Printex Tagging guns "Printex" S "Standard"



**Cod.29-101** Tagging gun *Printex* P70 S € 26,50  
This product is efficient, economical and easy to use!

A graphic advertisement for the Printex P70S tagging gun. It features the Printex logo and 'P70S' in the top right. The main text reads 'Attaccacartellini Tagging Gun Standard'. A large white 'S' is prominently displayed. Below it, it says 'Top Quality' and includes a QR code. At the bottom, it says 'IL Top della Qualità'. The background is split into blue and red sections.

SYSTEM 75  
(charged from 75 wires)

# Printex Tagging guns "Printex" X "FINE"



**Cod.29-1016** Tagging gun *Printex* P70 Fine € 46,50

A graphic advertisement for the Printex P70 Fine tagging gun. It features the Printex logo and 'P70 Fine' in the top right. The main text reads 'Attaccacartellini Tagging Gun Fine X'. A large white 'X' is prominently displayed. Below it, it says 'Top Quality' and includes a QR code. At the bottom, it says 'IL Top della Qualità'. The background is split into blue and green sections.

SYSTEM 100  
(charged from 100 wires)

# Printex Wires Gun Attack tags

## System "75" Standard



<b>Cod.28-101</b>	Standard 15mm PPL (5.000 pcs)	€ 9,00
<b>Cod.28-102</b>	Standard 25mm PPL (5.000 pcs)	€ 9,00
<b>Cod.28-103</b>	Standard 50mm PPL (5.000 pcs)	€ 10,00
<b>Cod.28-104</b>	Standard 65mm PPL (5.000 pcs)	€ 10,00
<b>Cod.28-105</b>	Standard 100mm PPL (5.000 pcs)	€ 12,00
<b>Cod.28-106</b>	Standard 125mm PPL (5.000 pcs)	€ 14,00
<b>Cod.28-107</b>	Standard 180mm PPL (5.000 pcs)	€ 18,00
<b>Cod.28-108</b>	Standard 230mm PPL (5.000 pcs)	€ 21,00

### Tag pin Fine

<b>Cod.28-109</b>	FINE 15mm PPL (5.000 pz)	€ 18,00
<b>Cod.28-110</b>	FINE 25 mm PPL (5.000 pz)	€ 18,00
<b>Cod.28-111</b>	FINE 50 mm PPL (5.000 pz)	€ 20,00



## System "100" Fine

### Tag pin Fine "100"

<b>Cod.28-127</b>	5mm Nylon (10.000 pcs)	€ 32,00
<b>Cod.28-128</b>	7mm Nylon (10.000 pcs)	€ 36,00
<b>Cod.28-129</b>	FINE 15mm PPL (10.000 pcs)	€ 36,00
<b>Cod.28-130</b>	FINE 25 mm PPL (10.000 pcs)	€ 36,00
<b>Cod.28-131</b>	FINE 50 mm PPL (10.000 pcs)	€ 40,00
<b>Cod.28-132</b>	FINE 65 mm PPL (10.000 pcs)	€ 48,00



## Interlocking tag pin



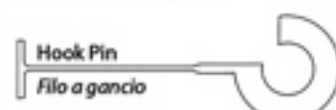
### SYSTEM CONE

<b>Cod.28-112</b>	HOLLOW 75 mm PPL (5.000 pcs)	€ 28,00
<b>Cod.28-113</b>	HOLLOW 130 mm PPL (5.000 pcs)	€ 32,00
<b>Cod.28-114</b>	HOLLOW 160mm PPL (5.000 pcs)	€ 36,00
<b>Cod.28-115</b>	HOLLOW 240mm PPL (1.000 pcs)	€ 9,50
<b>Cod.28-116</b>	HOLLOW 300mm PPL (1.000 pcs)	€ 12,00
<b>Cod.28-117</b>	HOLLOW 450mm PPL (1.000 pcs)	€ 19,00
<b>Cod.28-118</b>	HOLLOW 500mm PPL (1.000 pcs)	€ 19,00



<b>Cod.28-119</b>	HOLLOW 130mm PPL (5.000 pcs)	€ 36,00
<b>Cod.28-120</b>	HOLLOW 130mm PPL NERO (5.000 pcs)	€ 36,00

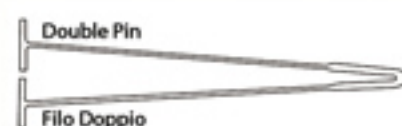
## Special tag pin



**Cod.28-133** LOOP 35 mm (5.000 pcs) € 39,00



**Cod.28-134** RING 35 mm (5.000 pcs) € 39,00



**Cod.28-135** DUPLEX 65mm PPL (5.000 pcs) € 36,00

Come True Custom sizes according to your needs "for Quantity"

# Printex

www.printexsrl.com  
info@printexsrl.com